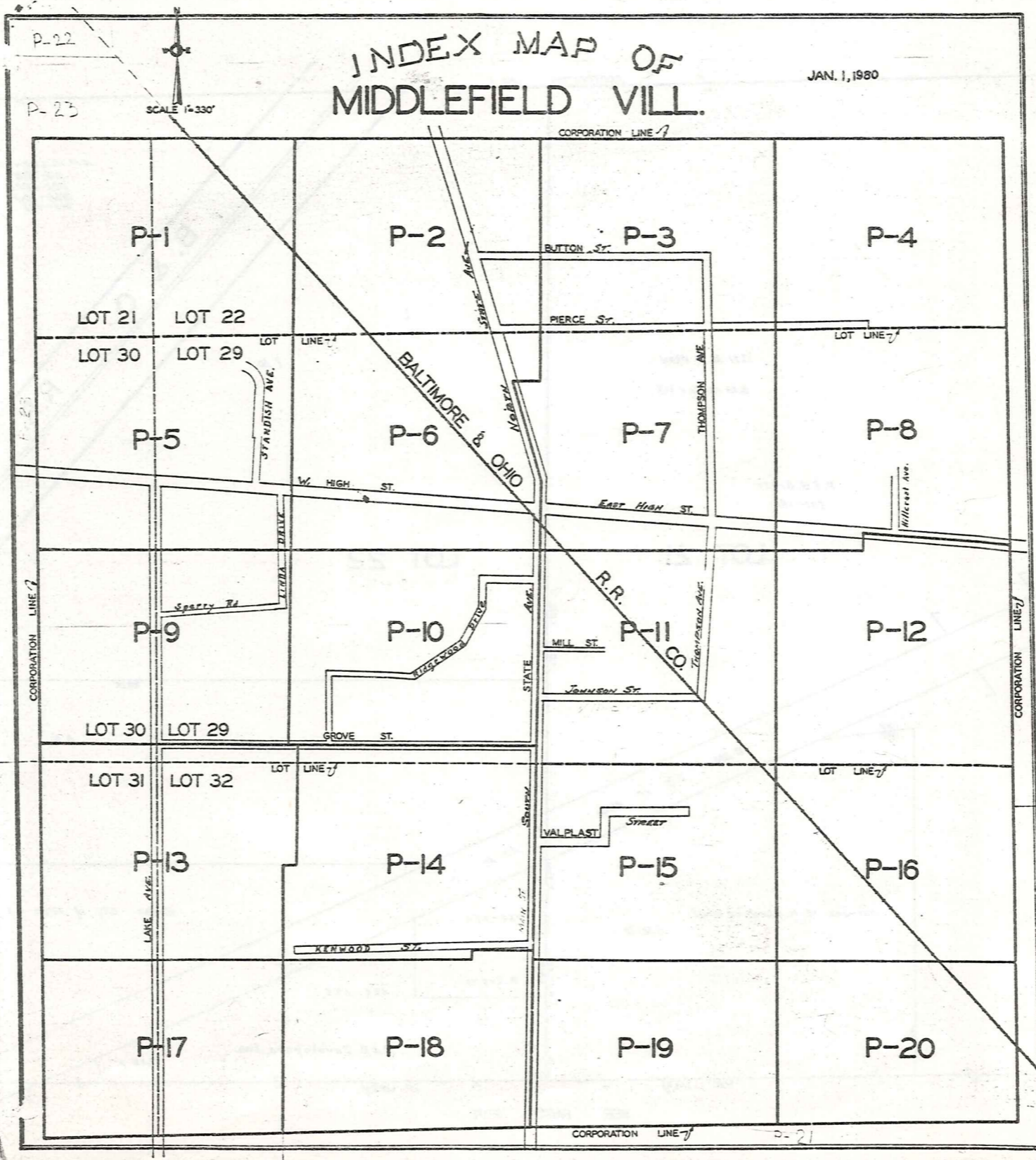
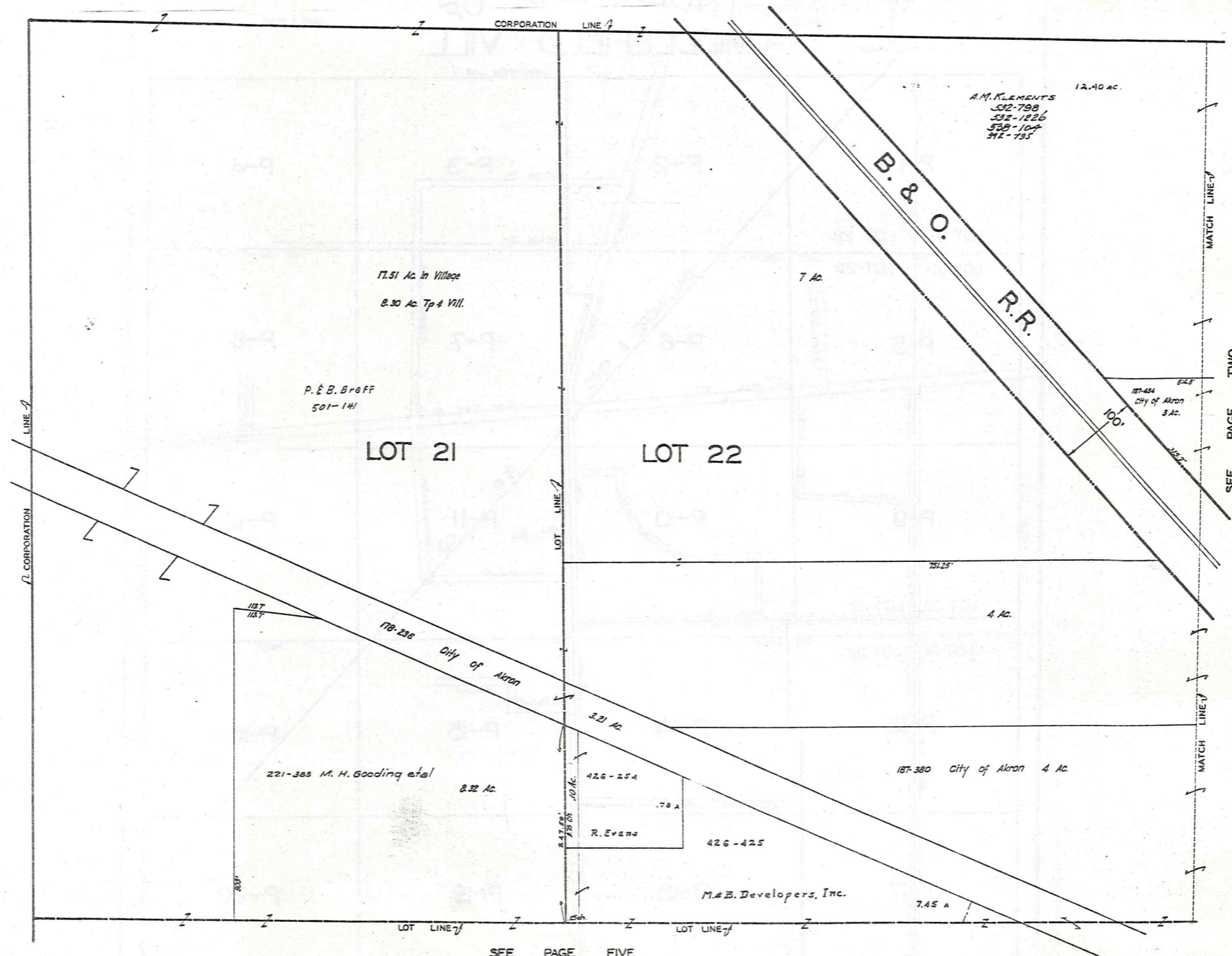


INDEX MAP OF MIDDLEFIELD VILL.

JAN. 1, 1980



MIDDLEFIELD VILLAGE

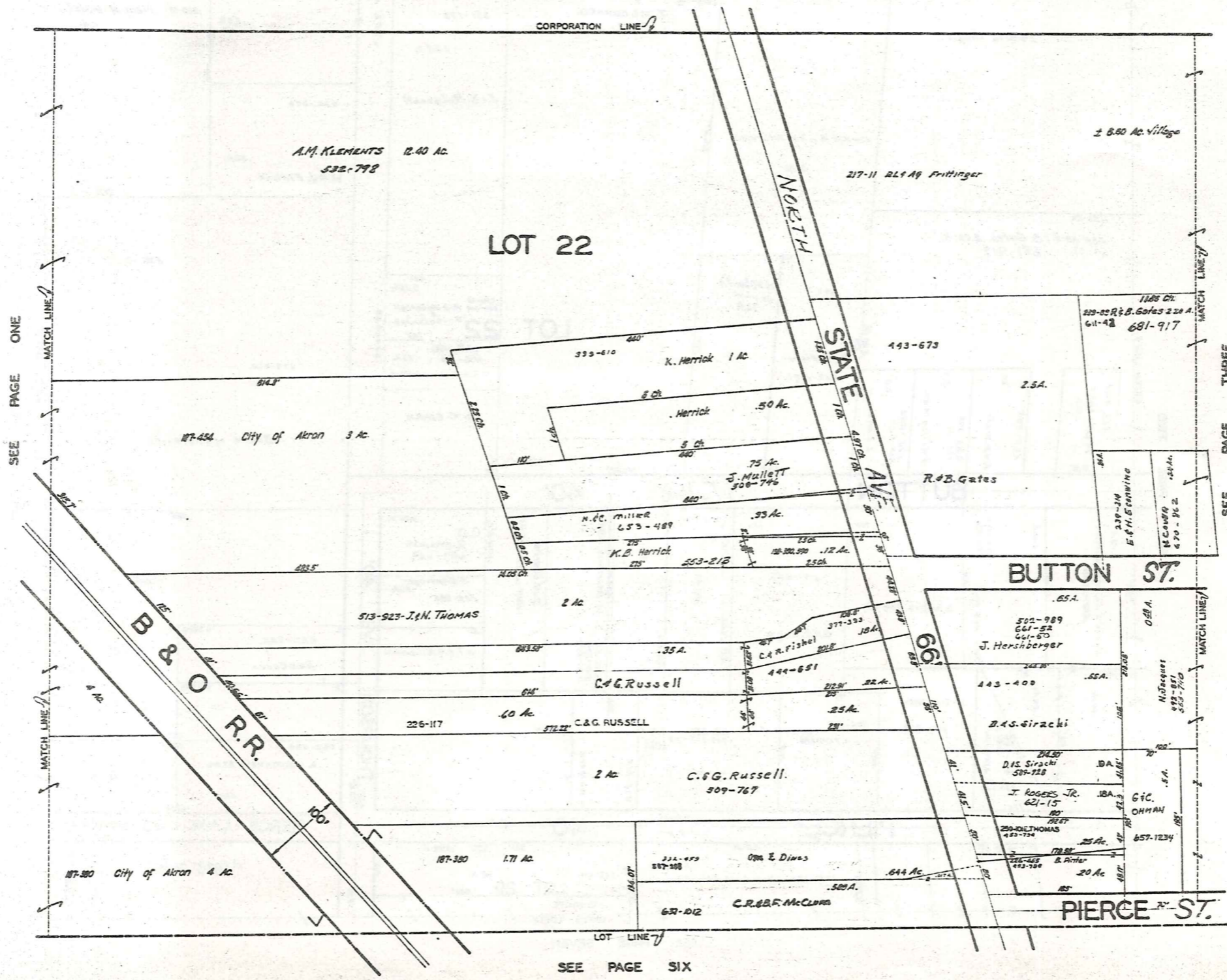


JAN. 1, 1982

SEE PAGE FIVE

SEE PAGE TWO

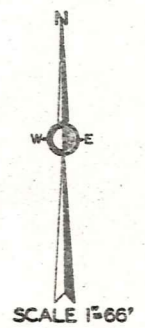
MIDDLEFIELD VILLAGE



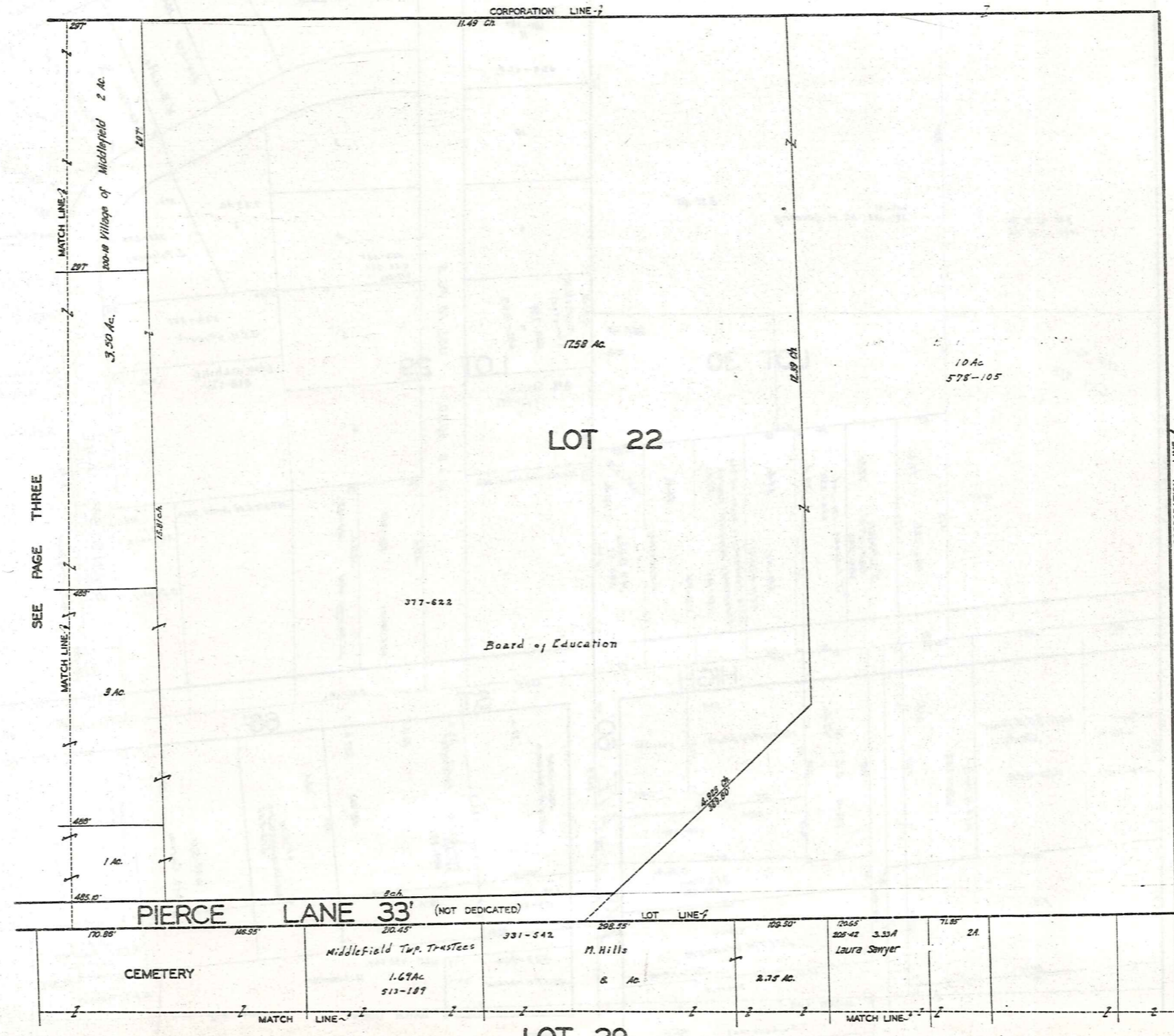
SEE PAGE ONE

SEE PAGE THREE

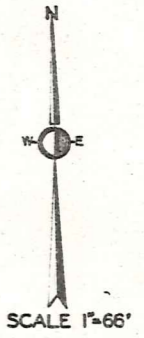
SEE PAGE SIX



JAN 1, 1982



SEE PAGE THREE



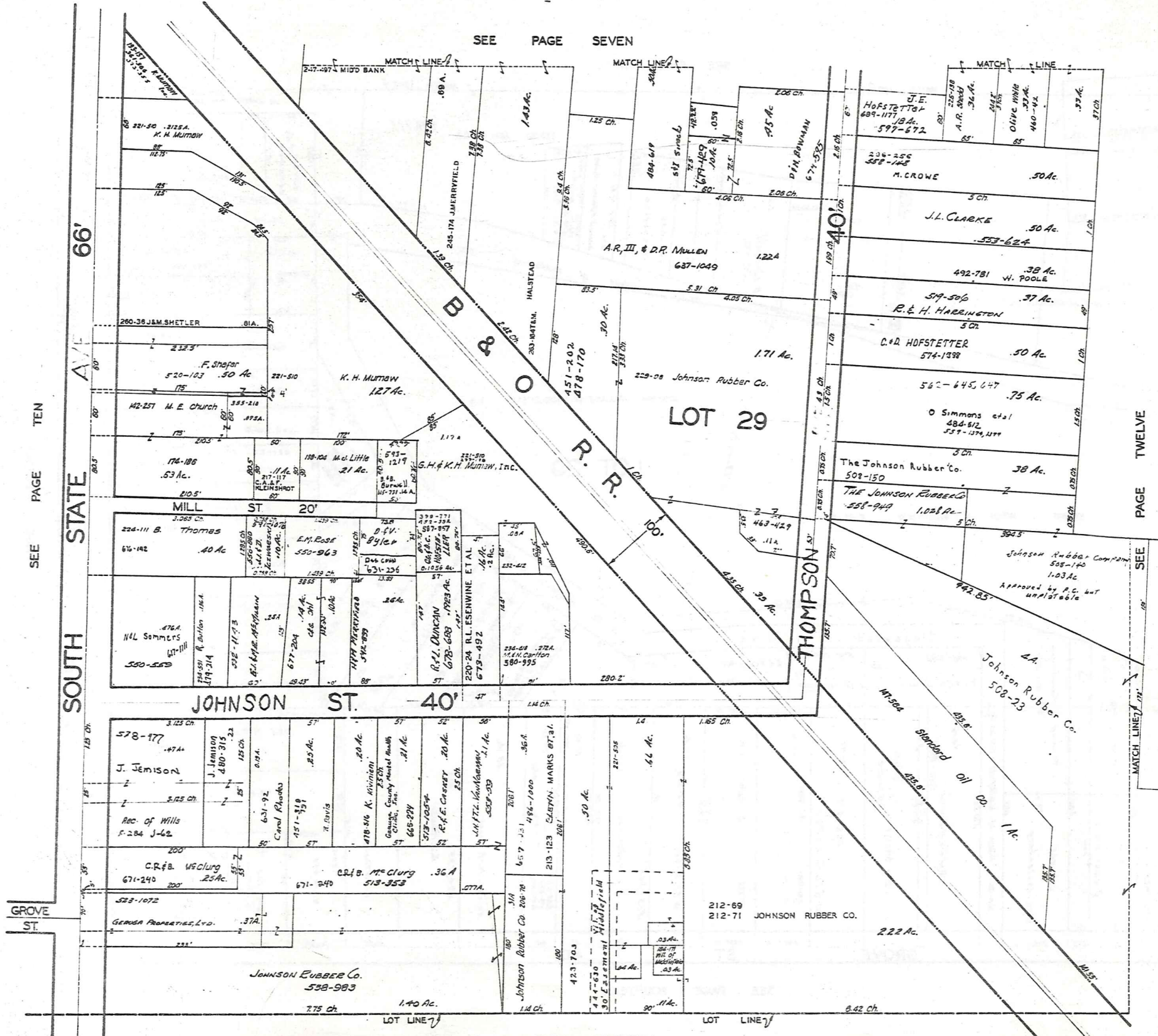
JAN .1, 1952

275

SEE PAGE EIGHT

MIDDLEFIELD VILLAGE
PAGE 6 MISSING

**MIDDLEFIELD VILLAGE
PAGE 7 MISSING**



SEE PAGE SEVEN

SEE PAGE TEN

PAGE TWELVE

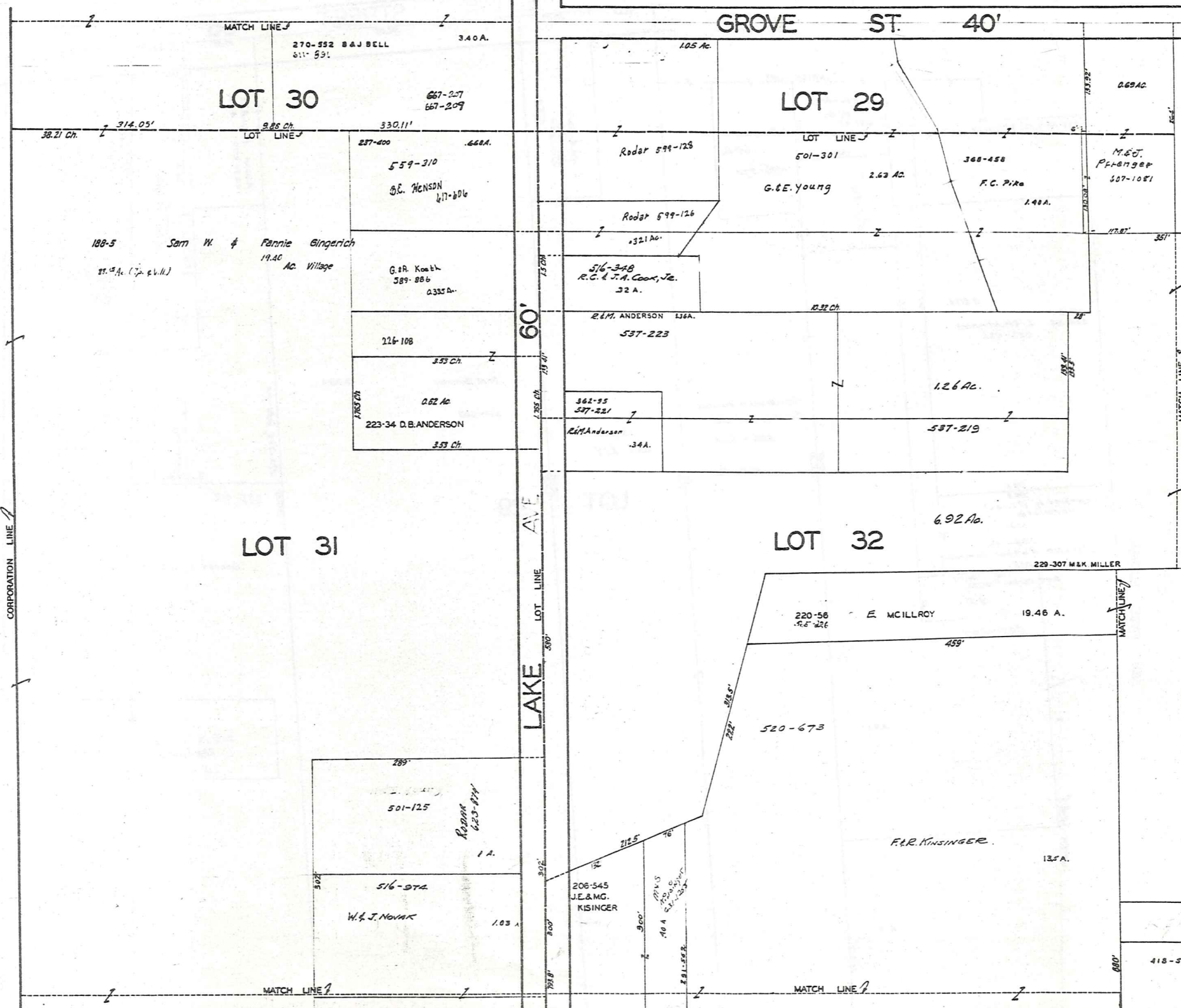
SEE



JAN. 1, 1982

SEE PAGE FIFTEEN

SEE PAGE NINE



SCALE 1"=66'

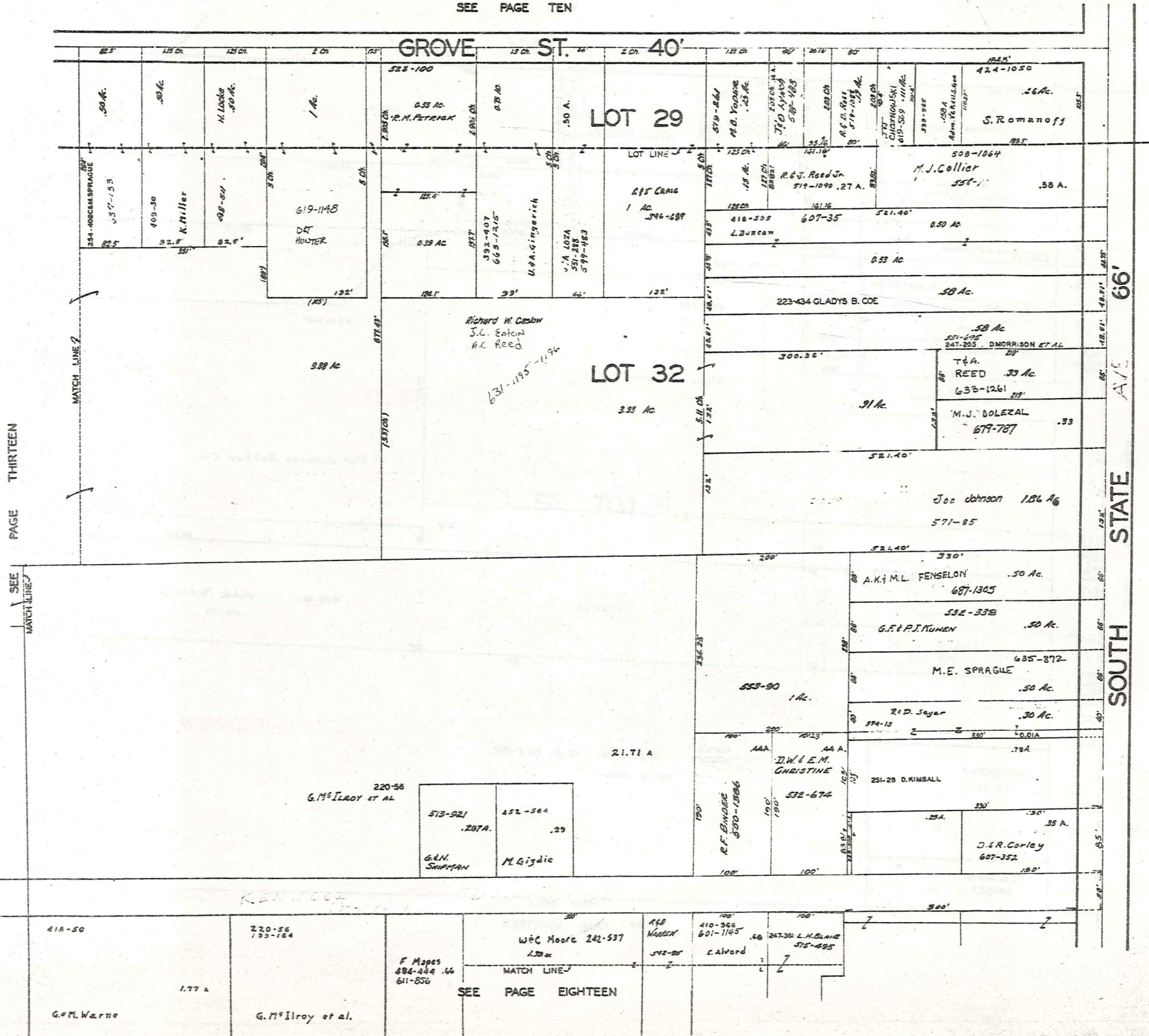
JAN. 1, 1982

SEE PAGE FOURTEEN

SEE PAGE SEVENTEEN

MIDDLEFIELD VILLAGE

SEE PAGE TEN



PAGE THIRTEEN

SEE MATCH LINE

STATE AVE 66' SOUTH

SEE PAGE FIFTEEN



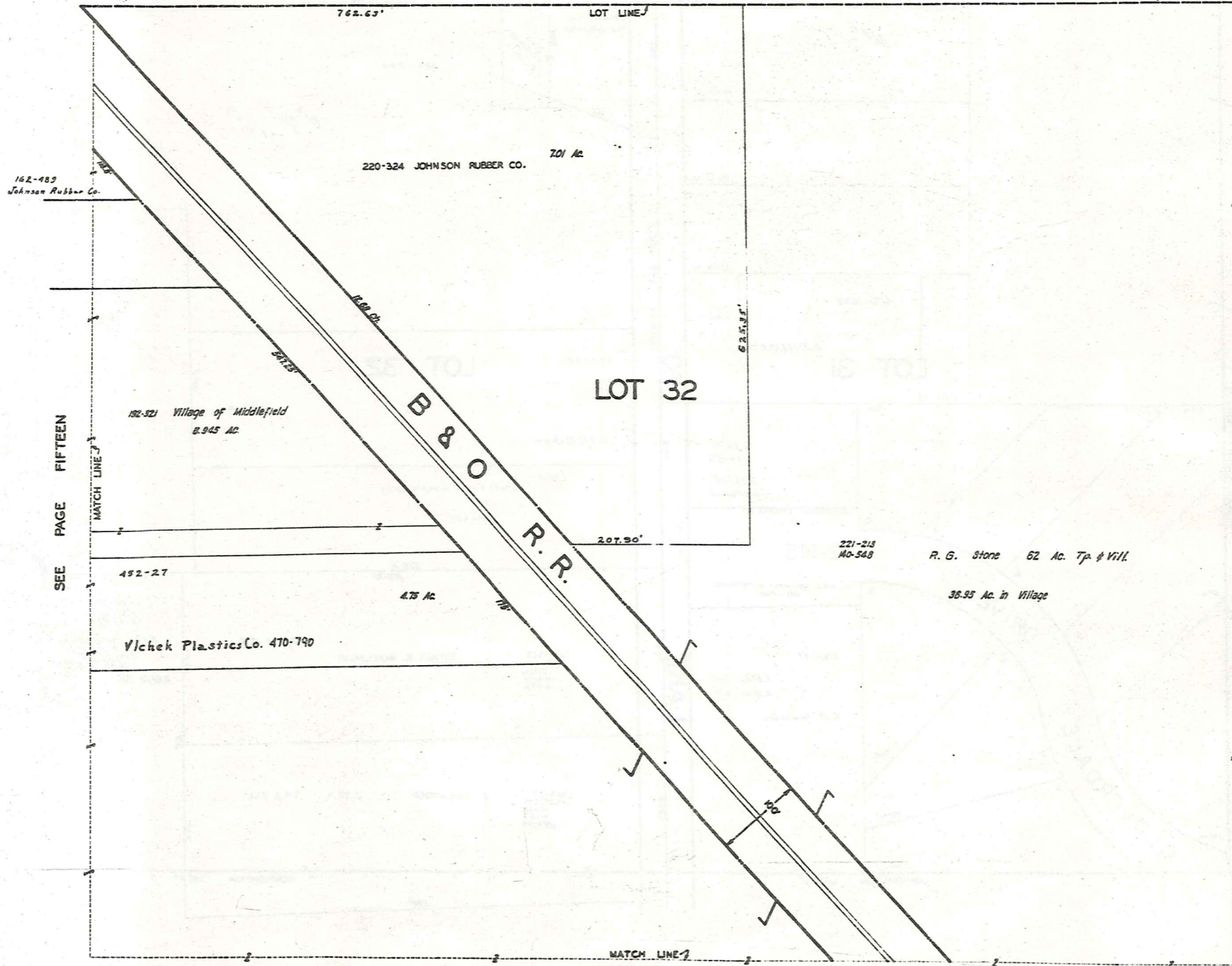
SCALE 1"=66'

JAN 1, 1962

285

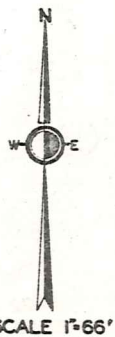
SEE PAGE EIGHTEEN

SEE PAGE TWELVE



162-489 Johnson Rubber Co.

SEE PAGE FIFTEEN



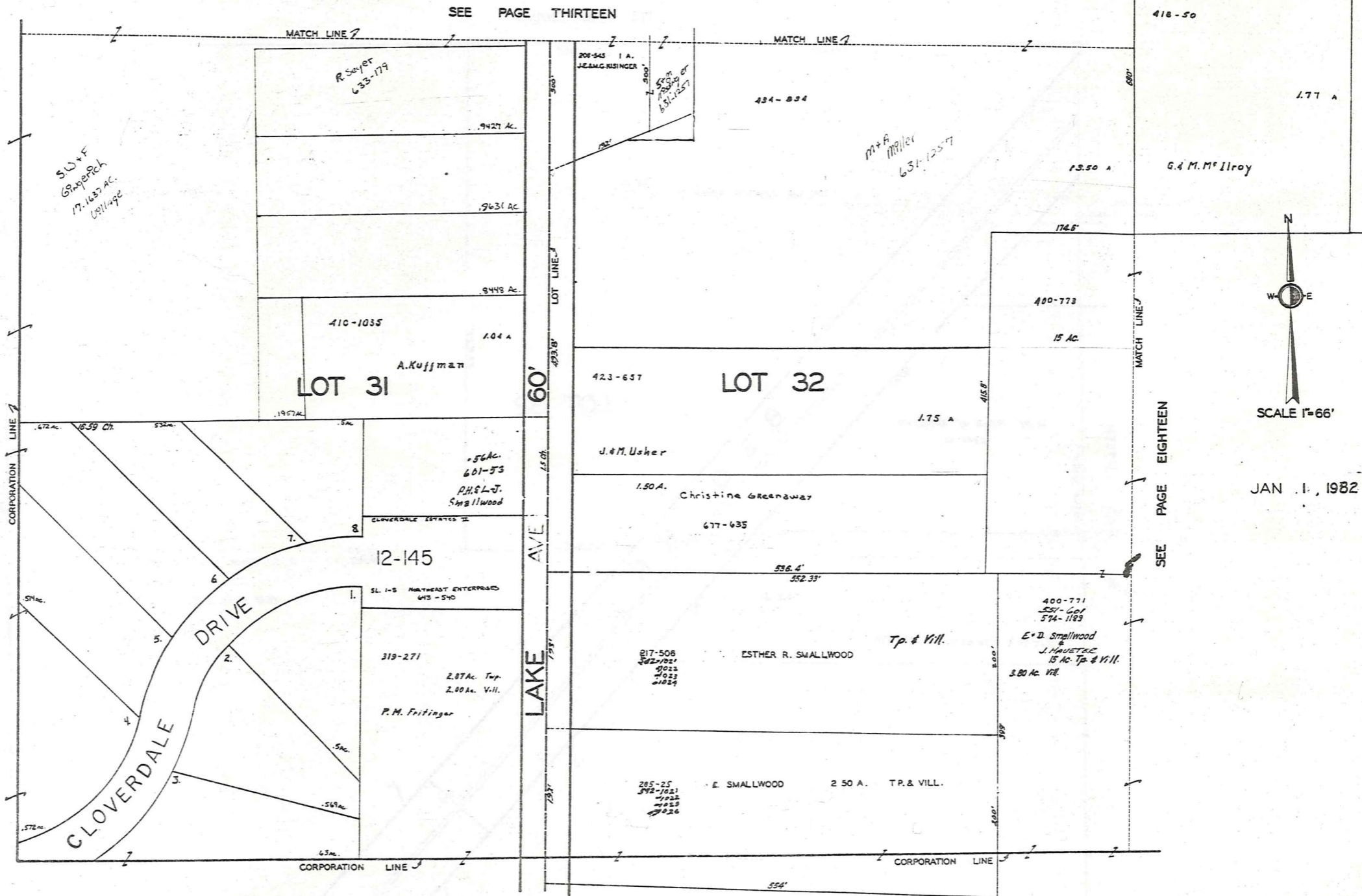
SCALE 1"=66'

JAN 1, 1982

SEE PAGE TWENTY

287

MIDDLEFIELD VILLAGE

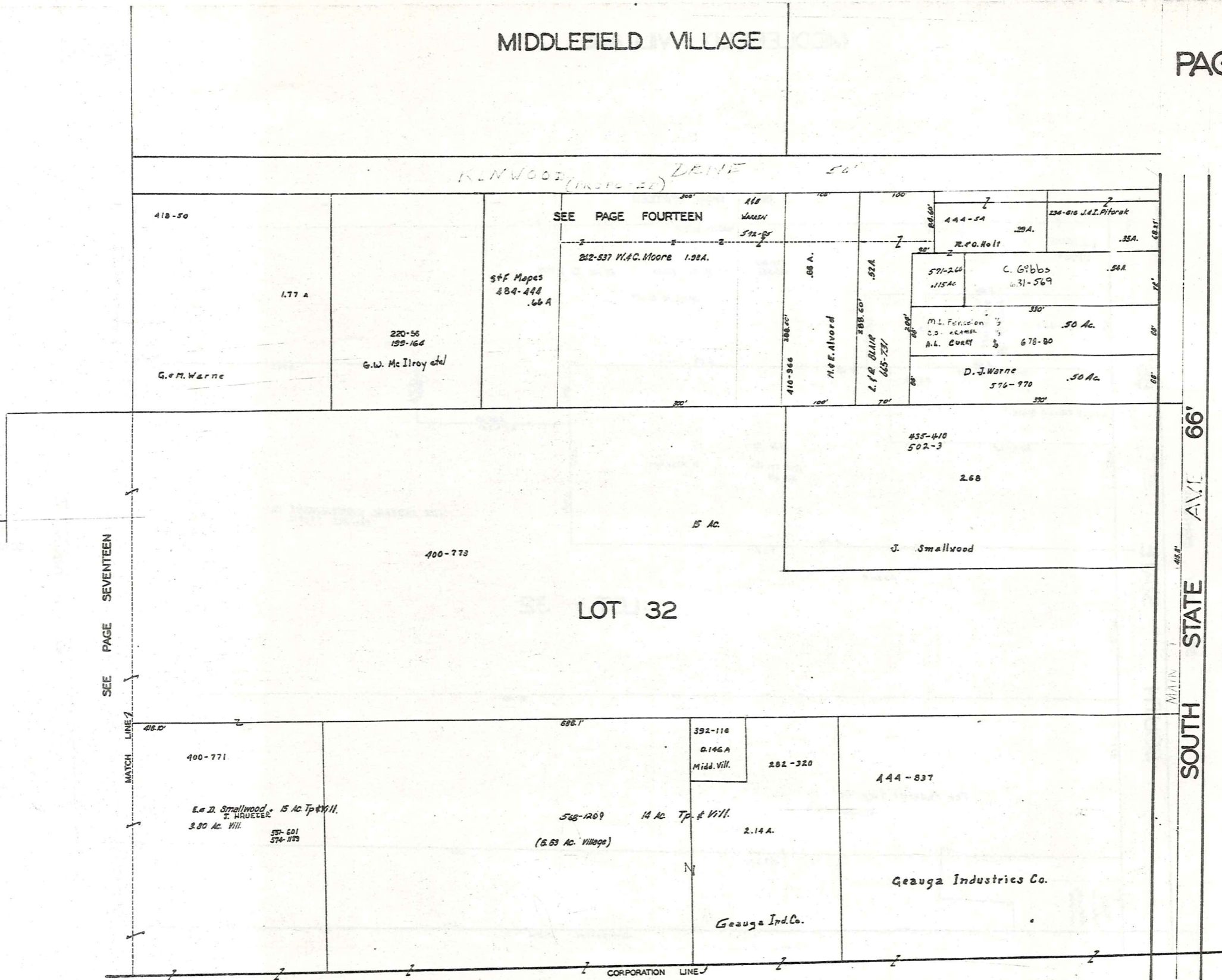


SCALE 1"=66'

JAN .1., 1982

MIDDLEFIELD VILLAGE

KENWOOD DRIVE 50'



SCALE 1"=66'

JAN 1, 1982

SEE PAGE SEVENTEEN

SEE PAGE NINETEEN

SEE PAGE SIXTEEN

MATCH LINE

221-219
140-548 R. G. Stone 62 Ac. Tp. & Vill.
38.95 Ac. in Village.

37.45 Ch. 930.5'

157-456 E. T. Steele Jr. et al
51.50 Ac. Tp. & Vill.
0.45 Ac. in Vill.

B & O R.R.

LOT 32

SEE PAGE NINETEEN

18 Ac.

633.5'

165 Ac. in Tp.

Federal Improvement Company

486-112 20.906 Ac.



SCALE 1"=66'

JAN .1, 1985

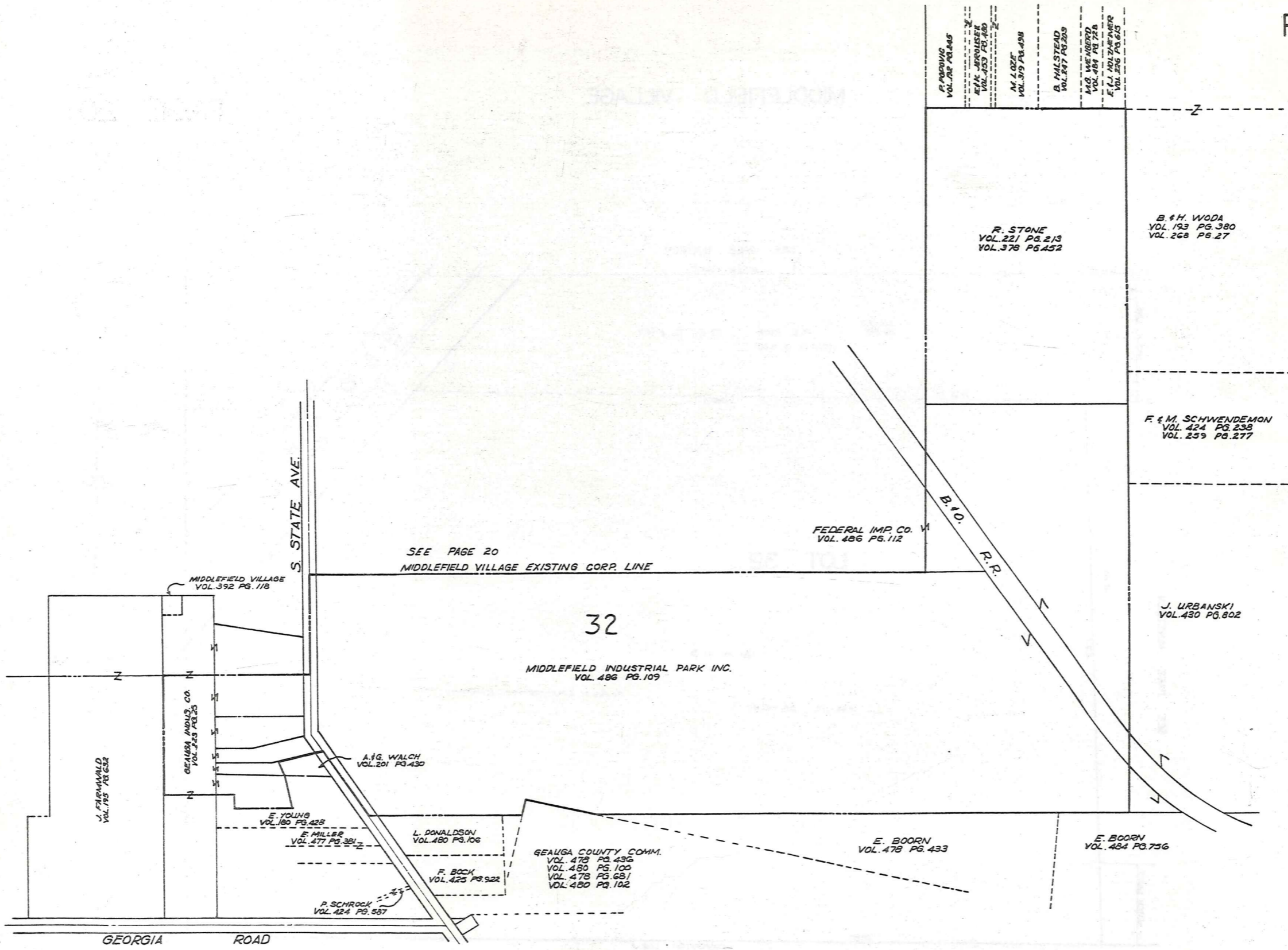
MATCH LINE

3055'

CORPORATION LINE

CORPORATION LINE

32



SCALE 1"=200'

JAN, 1982

MIDDLEFIELD VILLAGE

W. WALDEN

S. CORP. LINE 2

P. B. BRAFF
653-744; 745

142-335
5.0 Ac.
G. WILLIAMS

20

CORP. LINE

VILLAGE OF
MIDDLEFIELD
502-110
13.24 Ac.

P. B. BRAFF
501-141

512-528
6.27 Ac.

S. CORP. LINE 1

BRD FR

100'

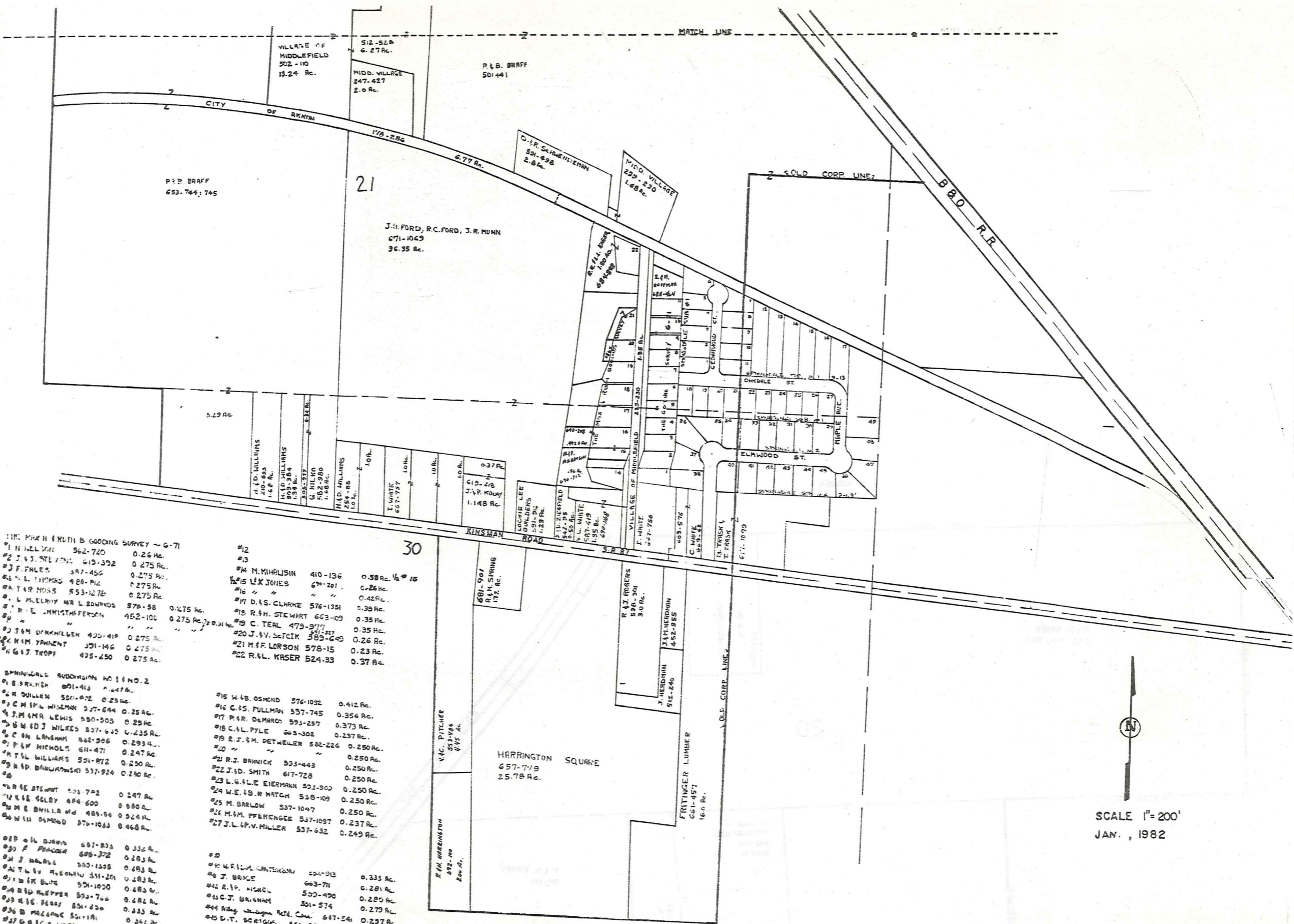


SCALE 1"=200'
JAN, 1982

293

MIDDLEFIELD VILLAGE
PG 22

MATCH LINE



- THE MARK (MUTH) B GOODING SURVEY - G-71
- #1 N. HILLMAN 562-720 0.26 Ac.
 - #2 J. G. STEVENSON 613-392 0.275 Ac.
 - #3 F. FALES 387-456 0.275 Ac.
 - #4 L. THOMAS 480-812 0.275 Ac.
 - #5 T. R. MOSS 553-1276 0.275 Ac.
 - #6 L. MURPHY AND L. EDWARDS 878-98 0.275 Ac.
 - #7 R. E. JENKINS 452-100 0.275 Ac.
 - #8 J. M. DUNKLEEN 400-418 0.275 Ac.
 - #9 R. M. TANNENT 391-196 0.275 Ac.
 - #10 G. J. TROPE 425-250 0.275 Ac.

- SPRINGDALE SUBDIVISION NO. 1 AND 2
- #1 B. BRUNER 601-413 0.27 Ac.
 - #2 M. DILLON 520-872 0.25 Ac.
 - #3 C. M. L. WISEMAN 537-644 0.25 Ac.
 - #4 J. M. G. LEWIS 550-505 0.25 Ac.
 - #5 W. D. J. WILKES 537-635 0.235 Ac.
 - #6 C. M. LANGHAM 562-906 0.293 Ac.
 - #7 P. W. NICHOLS 611-471 0.247 Ac.
 - #8 P. L. WILLIAMS 551-872 0.250 Ac.
 - #9 R. D. BARKWORTH 537-924 0.250 Ac.
 - #10 W. R. STEWART 533-742 0.247 Ac.
 - #11 E. E. SELBY 484-600 0.280 Ac.
 - #12 M. E. BULLA 485-96 0.24 Ac.
 - #13 W. H. OSBORN 370-1033 0.468 Ac.

- #14 O. L. BROWN 651-833 0.332 Ac.
- #15 F. BRADY 605-372 0.283 Ac.
- #16 J. WALSH 550-1535 0.283 Ac.
- #17 T. L. McEWAN 531-201 0.283 Ac.
- #18 W. M. BUE 551-1020 0.283 Ac.
- #19 R. D. MURPHY 533-704 0.282 Ac.
- #20 R. E. FEIST 551-230 0.333 Ac.
- #21 B. M. COLLINS 551-118 0.361 Ac.
- #22 G. A. C. WATSON 551-272 0.333 Ac.
- #23 W. D. PETERA 601-337 0.333 Ac.

- 30
- #12
 - #13
 - #14 M. M. HALLISH 410-136 0.58 Ac. 1/2 # 15
 - #15 L. K. JONES 670-201 0.26 Ac.
 - #16 " " " " 0.42 Ac.
 - #17 D. S. CLARKE 576-1351 0.39 Ac.
 - #18 R. H. STEWART 663-109 0.35 Ac.
 - #19 C. TEAL 479-817 0.35 Ac.
 - #20 J. V. SUTKIN 589-649 0.26 Ac.
 - #21 M. F. LORSON 578-15 0.23 Ac.
 - #22 R. L. KASER 524-93 0.37 Ac.

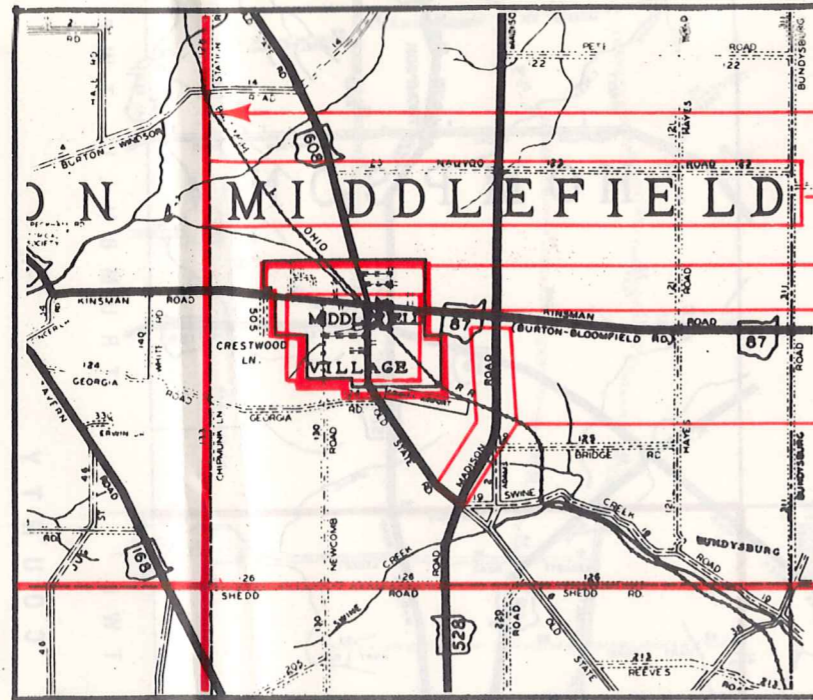
- #15 W. B. OSBORN 576-1032 0.412 Ac.
- #16 C. S. FULLMAN 537-745 0.356 Ac.
- #17 P. R. DEMARCO 593-257 0.373 Ac.
- #18 C. L. PYLE 665-302 0.237 Ac.
- #19 R. J. M. DETWEILER 582-226 0.250 Ac.
- #20 " " " " 0.250 Ac.
- #21 R. J. BANNICK 533-448 0.250 Ac.
- #22 J. D. SMITH 617-728 0.250 Ac.
- #23 L. G. L. EIERMANN 593-903 0.250 Ac.
- #24 W. E. B. R. MATCH 538-109 0.250 Ac.
- #25 M. BARLOW 537-1047 0.250 Ac.
- #26 M. M. PFEENGER 537-1097 0.237 Ac.
- #27 J. L. P. V. MILLER 537-632 0.249 Ac.

- #28
- #29 W. F. L. CANTONIA 524-018 0.333 Ac.
- #30 J. BRUCE 603-771 0.281 Ac.
- #31 R. P. WIGGEL 500-490 0.280 Ac.
- #32 C. J. BRANNAN 551-574 0.279 Ac.
- #33 W. J. WILSON JR. 647-241 0.297 Ac.
- #34 D. T. SCRIGGS 551-572 0.332 Ac.
- #35 J. W. M. M. BURNS 551-540 0.350 Ac.
- #36 R. A. B. BROWN 556-1077 0.337 Ac.
- #37 W. D. HUPP 657-292 0.335 Ac.
- #38 E. M. TROYER 552-724 0.332 Ac.

SCALE 1" = 200'
 JAN. , 1982

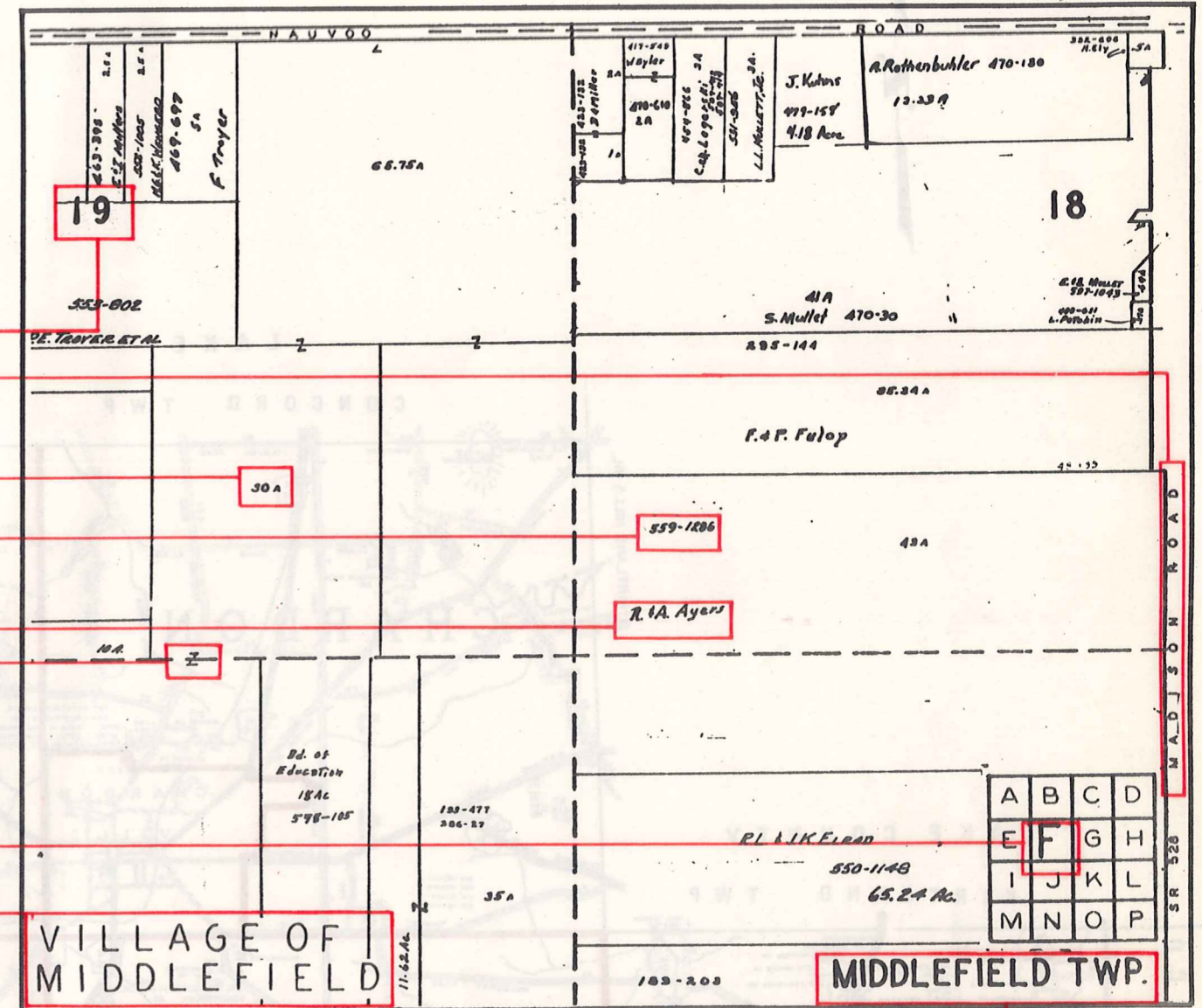
Explanation and Use Sheet for Geauga County, Ohio

SAMPLE (PARTIAL) COUNTY INDEX MAP



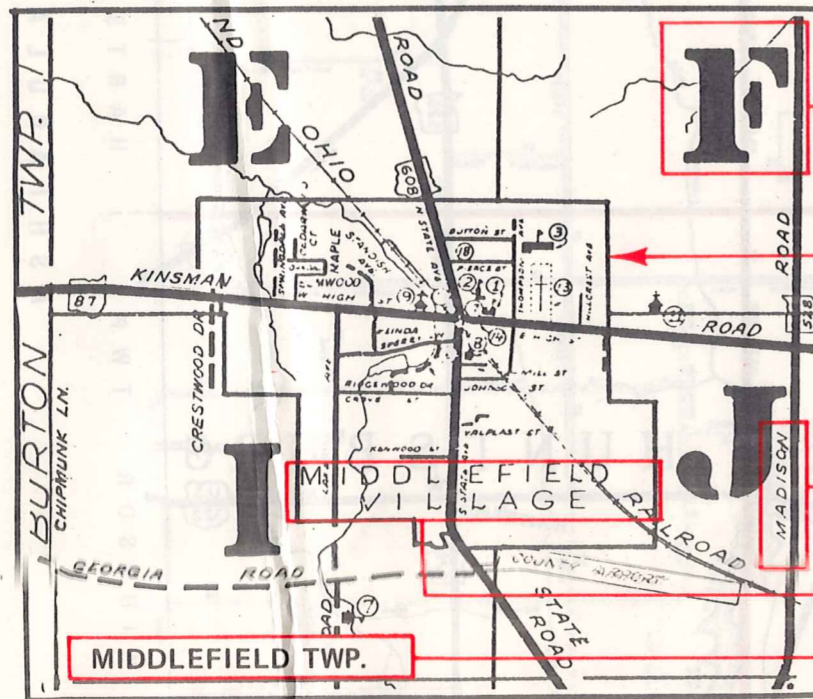
- Township Boundary
- Township Name
- Village Boundary
- Village Name
- Tract Lot Number
- Street Name
- Acreage
- Deed Book & Page
- Owners Name
- Denotes Continous Ownership

SAMPLE (PARTIAL) MAP PAGE



- Map Page Number
- Village Name
- Village Boundary
- Township Name

SAMPLE (PARTIAL) MUNICIPALITY INDEX MAP



- Street Name
- Village Name
- Township Name

USE OF THE MAP VOLUME

1. LOCATE THE GENERAL AREA OF INTEREST ON THE COUNTY INDEX MAP, ATLAS PAGE 'B', AND NOTE THE MUNICIPALITY NAME (TOWNSHIP OR VILLAGE).
2. REFER TO THE TABLE OF CONTENTS, ATLAS PAGE 'C', AND NOTE THE BEGINNING ATLAS PAGE NUMBER FOR THE MUNICIPALITY OF INTEREST.
3. TURN TO THE PAGE INDICATED. ON THIS PAGE WILL APPEAR AN INDEX MAP FOR THAT MUNICIPALITY.
4. LOCATE THE GENERAL AREA OF INTEREST AND NOTE THE MAP PAGE NUMBER. THIS MAY BE EITHER A LETTER OR A NUMBER.
5. MAP PAGES ARE IN ALPHABETICAL (OR NUMERICAL) SEQUENCE FOLLOWING THE MUNICIPALITY INDEX MAP. FOLLOW SEQUENCE TO THE MAP PAGE INDICATED.
6. LOCATE SPECIFIC PARCEL OF INTEREST AND NOTE THE DESIRED INFORMATION.

NOTE: ON SOME MAPS YOU MAY BE REFERRED TO A DETAIL SHEET SHOWING AN ENLARGEMENT OF THE AREA. THESE MAPS ARE FOUND AT THE END OF THE REGULAR MAP PAGES IN EACH MUNICIPALITY IN EITHER ALPHABETICAL OR NUMERICAL SEQUENCE.

NOTE: CHARDON VILLAGE HAS TITLE SHEETS. TO LOCATE OWNERS NAME, NOTE THE PARCEL NUMBER, REFER TO THE TITLE PAGE FOLLOWING THE MAP OF INTEREST, FOLLOW NUMERICAL SEQUENCE TO THE PARCEL NUMBER OF INTEREST AND NOTE THE DESIRED INFORMATION. IN ALL OTHER MUNICIPALITIES THE OWNERS NAME APPEARS ON THE MAP PAGE.

This book is the property of REAL ESTATE DATA, INC. and is distributed by REDI under a leasing arrangement requiring return to REDI upon termination of the lease. REDI reserves the right to reclaim this book if found in the possession of any firm or person where possession was obtained through any unauthorized source.